



A Division of Ross & Barr, Inc.

QUALITY,
VERSATILITY
AND VALUE

4TH EDITION CATALOG

COVERWORX OUR STORY

COVERWORX RECREATIONAL ARCHITECTURE

Our Steelworx steel-frame shelters and structures are custom crafted from durable, high gauge tubular steel. The beauty and creativity behind every one of our Steelworx shelters comes from the years of experience held by our ASTM-certified welders, structural fabrication specialists and skilled design engineers who carefully handcraft to the highest industry quality standards. Utilizing a free-span design without the need for exposed fasteners, open truss members and no possibility for bird nesting, all shelters come ready to assemble with no cutting, welding, or painting required.

Standard finish is comprised of sand blasted, zinc-primed, 4-6 mil thick polyester powder coating available in a variety of standard colors. Roofing provided is a pre-cut high-quality 24 gauge steel panel, and is offered in a variety of colors and profiles.

A few of the virtually unlimited options for Steelworx shelters include handrails, overhead lattice round or custom designed support columns, Pine or Cedar Tongue and Groove overhead decking and cupolas. Corrugated and standing seam metal roofing available on all structures. Standard shapes available include Squares, Hexagonal, Octagonal, and Rectangular Open Gable or Hipped ends. Custom shapes, combinations of shapes, rounded or curved tops are always welcome and are an exciting way to add class and style to any landscape setting imaginable. Consider a Coverworx "Vented Top" option to your Steelworx structure. It's a functional way to address style or venting needs. The versatility of Coverworx structure design is only limited to your imagination!



STEELWORX



Gables	3
Crossing Shelters	7
Hips	9
Cantilevered	11
Octagons	13
Hexagons	15
Squares	17
Pergolas & Entry Arches	19
Kiosks	21
Walking Bridges	22

WOODWORX



Wood Canopies	23
---------------------	----

OPTIONS & UPGRADES



Specialty Products & Amphitheatres	25
Options & Upgrades	29
Extras & Site Furnishings	31
Warranty	32
Color Options	33

STEELWORX GABLES

OPEN-END CANOPIES



Steelworx Gables are available in many styles, colors and optional features. A Coverworx Steelworx gable canopy is the most economical way to provide shelter without compromising functionality and durability. Each gable shelter is hand-crafted with the utmost attention to detail and the highest industry quality standards.

STOCK & CUSTOM SHELTER OPTIONS, SEE PAGE 29-30
FOR SHELTER EXTRAS & FURNISHINGS, SEE PAGE 31-32
FRAME & ROOF COLOR OPTIONS, SEE PAGE 33-34



AE-GA-1616-SW-AE



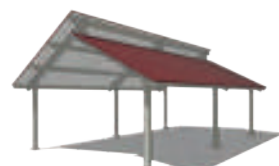
GA-3070-SW



GA-1010-SW-2-PT



BASIC GABLE



SPLIT-TOP GABLE



VENTED GABLE



2-POST GABLE



GA-2030-SW-AE



GA-3645-SW-VT



GA-3050-SW-ST



GA-1212-SW-TG



P-GA-4060-SW-VT



GA-3040-SW-AE-TG



GA-70110-SW-AE-VT



GA-2030-SW-AE-SB



DC-3035-SW-12-E



GA-2026-SW-TG-AE



GA-2244-SW-VT



R-GA-2040-SW



DC-2030-SW-C



DC-60100-SW-OE

STEELWORX GABLES

OPEN-END CANOPIES



DC-60100-SW-OE

Steelworx Gables are available in many styles, colors and optional features. A Coverworx Steelworx gable canopy is the most economical way to provide shelter without compromising functionality and durability. Each gable shelter is hand-crafted with the utmost attention to detail and the highest industry quality standards.

**STOCK & CUSTOM SHELTER OPTIONS, SEE PAGE 29-30
FOR SHELTER EXTRAS & FURNISHINGS, SEE PAGE 31-32
FRAME & ROOF COLOR OPTIONS, SEE PAGE 33-34**



GA-3040-SW-AE-C



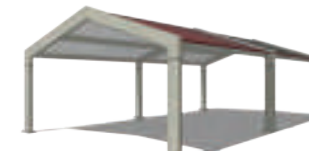
GA-3040-SW-AE



GA-2040-SW-812



DOWNCURVE GABLE



RECESSED GABLE



SUNBURST GABLE

ARCHITECTURAL
END GABLE

STEELWORX CROSSING

SHELTERS



Steelworx Crossing Shelters can be arranged in a variety of ways to transform a basic gable or hip shelter into a dynamic centerpiece for your site. Choose from the standards shown here or mix and match gable and hip ends. Other possibilities include adding ornate design elements or architectural end gables.

STOCK & CUSTOM SHELTER OPTIONS, SEE PAGE 29-30
FOR SHELTER EXTRAS & FURNISHINGS, SEE PAGE 31-32
FRAME & ROOF COLOR OPTIONS, SEE PAGE 33-34



CROSSING GABLE



CROSSING T GABLE



CROSSING HIP



CROSSING T HIP



HP-1224-SW

STEELWORX HIPS

CLOSED-END CANOPIES

Steelworx Hips provide a more shelter than a gable canopy while using a similar column layout and roof area. These canopies are great when a more finished look is needed.

STOCK & CUSTOM SHELTER OPTIONS, SEE PAGE 29-30
FOR SHELTER EXTRAS & FURNISHINGS, SEE PAGE 31-32
FRAME & ROOF COLOR OPTIONS, SEE PAGE 33-34



HP-2040-SW-VT



HP-4044-SW-VT-C



HP-2030-SW-C



HP-2030-SW-VT



HP-2024-SW



STANDARD HIP



2-POST HIP



VENTED HIP



HP-2044-SW-VT



HP-3044-SW-TC



HP-6080-SW-VT

STEELWORX CANTILEVERED

OPEN-SIDED CANOPIES



Steelworx Cantilevered shelters are ideal for sites without the extra space for a lot of columns. These canopies work great as dugout and bleacher shelters.

STOCK & CUSTOM SHELTER OPTIONS, SEE PAGE 29-30
FOR SHELTER EXTRAS & FURNISHINGS, SEE PAGE 31-32
FRAME & ROOF COLOR OPTIONS, SEE PAGE 33-34



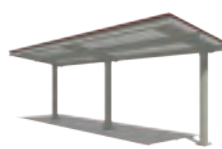
CANTILEVER



CURVED CANTILEVER



RADIUS CANTILEVER



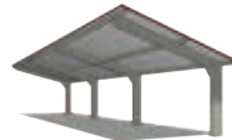
CANTILEVER DUGOUT



CENTER-POST DUGOUT



5-POST DUGOUT



CANTILEVER LARGE



BC-1880-SW



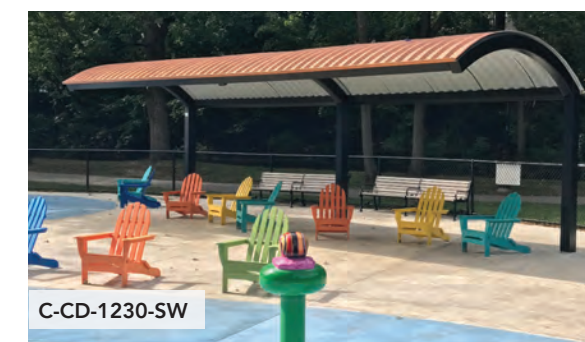
R-CD-1650-SW



CD-1212-SW



CD-1624-SW



C-CD-1230-SW



CD-1020-SW



CD-1430-SW



OC-60-SW-612



STEELWORX OCTAGONS

8-SIDED CANOPIES



OC-24-SW-HVT



OC-36-SW



OC-24-SW-VT-TGC



OC-44-SW-VT



OC-40-SW



OG-SP-28-SW



S-OC-4080-SW-VT-TG

Steelworx Octagons provide a very decorative and elegant looking canopy. They have a timeless appeal that works well with any site.

STOCK & CUSTOM SHELTER OPTIONS, SEE PAGE 29-30
FOR SHELTER EXTRAS & FURNISHINGS, SEE PAGE 31-32
FRAME & ROOF COLOR OPTIONS, SEE PAGE 33-34



SINGLE-POST OCTAGON



2-POST OCTAGON



STRETCHED VENTED OCTAGON



STRETCHED OCTAGON



VENTED OCTAGON



STANDARD OCTAGON

STEELWORX HEXAGONS

6-SIDED CANOPIES



HX-20-SW

Steelworx Hexagons provide the same elegance and timelessness of an octagon canopy with the benefit of having two less columns.

STOCK & CUSTOM SHELTER OPTIONS, SEE PAGE 29-30
FOR SHELTER EXTRAS & FURNISHINGS, SEE PAGE 31-32
FRAME & ROOF COLOR OPTIONS, SEE PAGE 33-34



STRETCHED HEXAGON



VENTED HEXAGON



STANDARD HEXAGON



SINGLE-POST HEXAGON



2-POST HEXAGON

DOUBLE-PITCH
HEXAGONSTRETCHED VENTED
HEXAGON

HX-20-SW-C



HX-20-SW-VT-C



HX-60-SW-DVT



S-HX-1624-SW-VT-C



HX-24-SW-DP



HX-10-SW-DP



SQ-12-SW



SQ-18-SW-VT



SQ-40-SW-VT-TG



SQ-2424-SW-VT



SQ-20-SW-VT-WX



SQ-12-SW-2P



SQ-30-SW-VT-C

STEELWORX SQUARES

4-SIDED CANOPIES



SQ-20-SW

Steelworx Squares feature the look of a hip canopy with the added appeal of having four equal sides and a single peak. Larger square canopies will require additional columns around the perimeter.

STOCK & CUSTOM SHELTER OPTIONS, SEE PAGE 29-30
FOR SHELTER EXTRAS & FURNISHINGS, SEE PAGE 31-32
FRAME & ROOF COLOR OPTIONS, SEE PAGE 33-34



SQ-20-SW-VT



SQ-12-SW



STANDARD SQUARE



VENTED SQUARE



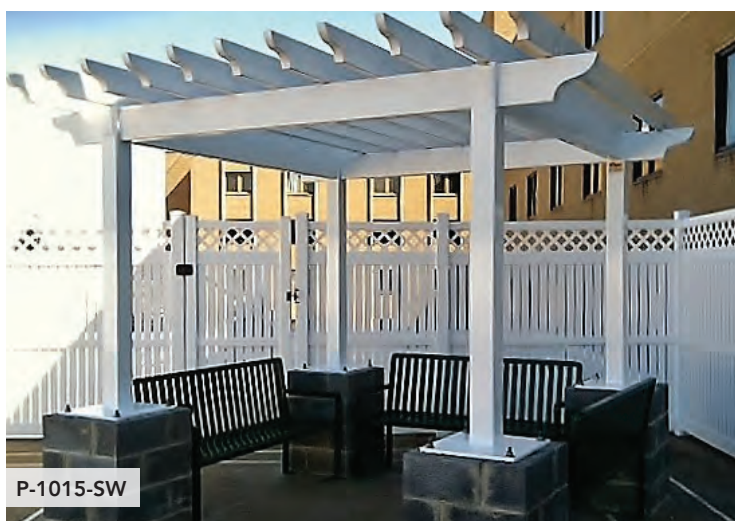
SINGLE-POST SQUARE



2-POST SQUARE

STEELWORX PERGOLAS & ENTRY ARCHES

OPEN-AIR STRUCTURES

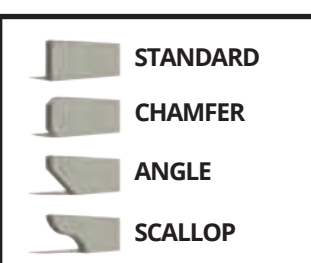


Steelworx Pergolas & Arbors are custom in nature due to the unlimited placement of columns, supporting beams and lattice members. Pergolas and Arbors come standard with tubular steel members, but can also be combined with pressure treated wood beams and lattice.

Entrance Frames offer a focal point to a park's entrance. Using the latest technology in computer controlled machinery, park names, custom logos or decorative lattice can be cut from solid steel and added to enhance an entrance frame.

All pergolas and trellises vary in size and spacing. Please inquire about a structure to fit your exact needs.

END CUT OPTIONS



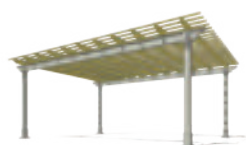
ARCH ENTRANCE



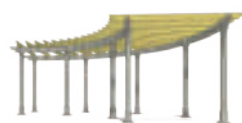
ARCHWAY ENTRANCE
SIGN



ENTRANCE SIGN



PERGOLA



RADIUS PERGOLA



ARBOR



RADIUS ARBOR



STEELWORX KIOSKS

INFORMATION CENTERS



Coverworx Kiosk exemplify versatility. With many frame choices and styles our lockable and hinged Lexan panel display cases are useful for any application. Choose single sided or double sided boards (where applicable). The quantity of boards needed is up to you! Our frames utilize our polyester powder coated finish with our basic 24 gauge multirib roofing panels as our basic roofing. Custom designs and styles as always are welcome.

STOCK & CUSTOM SHELTER OPTIONS, SEE PAGE 29-30
FOR SHELTER EXTRAS & FURNISHINGS, SEE PAGE 31-32
FRAME & ROOF COLOR OPTIONS, SEE PAGE 33-34



SINGLE POST



2-POST



3-POST



4-POST



SINGLE-POST SQUARE



2-POST GABLE



HEXAGONAL



BENT DIAMOND

COVERWORX WALKING BRIDGES

FOR PEDESTRIANS



Coverworx Walking / Pedestrian bridges are versatile and gorgeous. Utilizing our polyester powder coated framework our tube steel supports and connectors are pre-welded and shipped with little or no field bolting required. Our Coverworx engineers will work with you and your soil condition and/or embankment condition to come up with a design that is not only durable and timeless but gorgeous for your site. Custom sizes only, pricing and designs are worked on a per-project basis.

STOCK & CUSTOM SHELTER OPTIONS, SEE PAGE 29-30
FOR SHELTER EXTRAS & FURNISHINGS, SEE PAGE 31-32
FRAME & ROOF COLOR OPTIONS, SEE PAGE 33-34



WALKWAY BRIDGE
SMALL



WALKWAY BRIDGE
MEDIUM



WALKWAY BRIDGE
LARGE

WOODWORX WOOD CANOPIES

GLUE-LAMINATED



GAB-4060-WW

From standard gable shelters to custom centerpieces, all Wordworx shelters come standard with 2" x 6" Southern yellow pine tongue & groove decking with metal or shingle roofing, glue laminated framing, pressure treated columns and powder coated steel connecting plates. Columns and rafters can be upgraded to powder coated tubular steel as seen below. Various roof and column options are available. Vented Top design available on may Woodworx models.



STANDARD SHAPES
HEXAGONS, OCTAGONS,
SQUARES & MORE!



STRAIGHT GABLE



ARCH BEAM GABLE



RETRO GABLE



WAVE BEAM GABLE



GAC-4020-WW



OC-GZ-30-WW-D



WGA-2430-WW



OC-24-WW-C



GWB-4030-WW



GWB-4020-WW

COVERWORX SPECIALTY

SPECIALTY PRODUCTS & AMPHITHEATRES

Coverworx AWS certified welders and craftsmen carefully handcraft tubular steel framework to the highest industry quality standards utilizing a free-span design without the need for exposed fasteners, open truss members and no possibility for bird nesting. All shelters come ready to assemble with no cutting, welding or painting required.

Standard finish is comprised of sand-blasted, zinc-primed, 4-6 mil thick polyester powder coating available in a variety of standard colors. Roofing provided is a pre-cut, high quality 24 gauge steel panel, and is offered in a variety of colors and profiles.

STOCK & CUSTOM SHELTER OPTIONS, SEE PAGE 29-30
FOR SHELTER EXTRAS & FURNISHINGS, SEE PAGE 31-32
FRAME & ROOF COLOR OPTIONS, SEE PAGE 33-34



CUSTOM BLEACHER COVER



35x35 X-POST MONOSLOPE



SQ-20-VT-WX-812



CARWASH FRAMES



LASER CUT DECORATIVE OPTION(S)



BARN-STYLE GABLE



CLOCK TOWER FRAME



CUSTOMIZED FOR YOUR NEEDS



BAND SHELTER



LASER CUT ENTRY SIGN



BUS STOP STRUCTURE



X POST DESIGN



LASER CUT CENTER MEDALLION



FARMERS MARKET MEGA-DESIGN



RESTROOM ENCLOSURE

COVERWORX SPECIALTY

SPECIALTY PRODUCTS & AMPHITHEATRES

Coverworx Specialty Products consist of Amphitheaters, Bus Stops, Laser Cutting as well as Carport and Restroom and Dumpster Enclosures. Coverworx is versatile enough to handle your Custom Designs. If you can dream it, Coverworx can fabricate it. We specialize in creating custom designs.

The Coverworx versatility really comes though in our specialty products and amphitheaters. Our custom laser cutting capabilities along with our unmatched quality in wood or steel and design can create a beautiful custom project in any setting. Available in virtually any size imaginable, let us know your needs.

STOCK & CUSTOM SHELTER OPTIONS, SEE PAGE 29-30
FOR SHELTER EXTRAS & FURNISHINGS, SEE PAGE 31-32
FRAME & ROOF COLOR OPTIONS, SEE PAGE 33-34



SINGLE-POST UMBRELLA



MAILBOX COVERS



PERF TOP GEO-ROOF

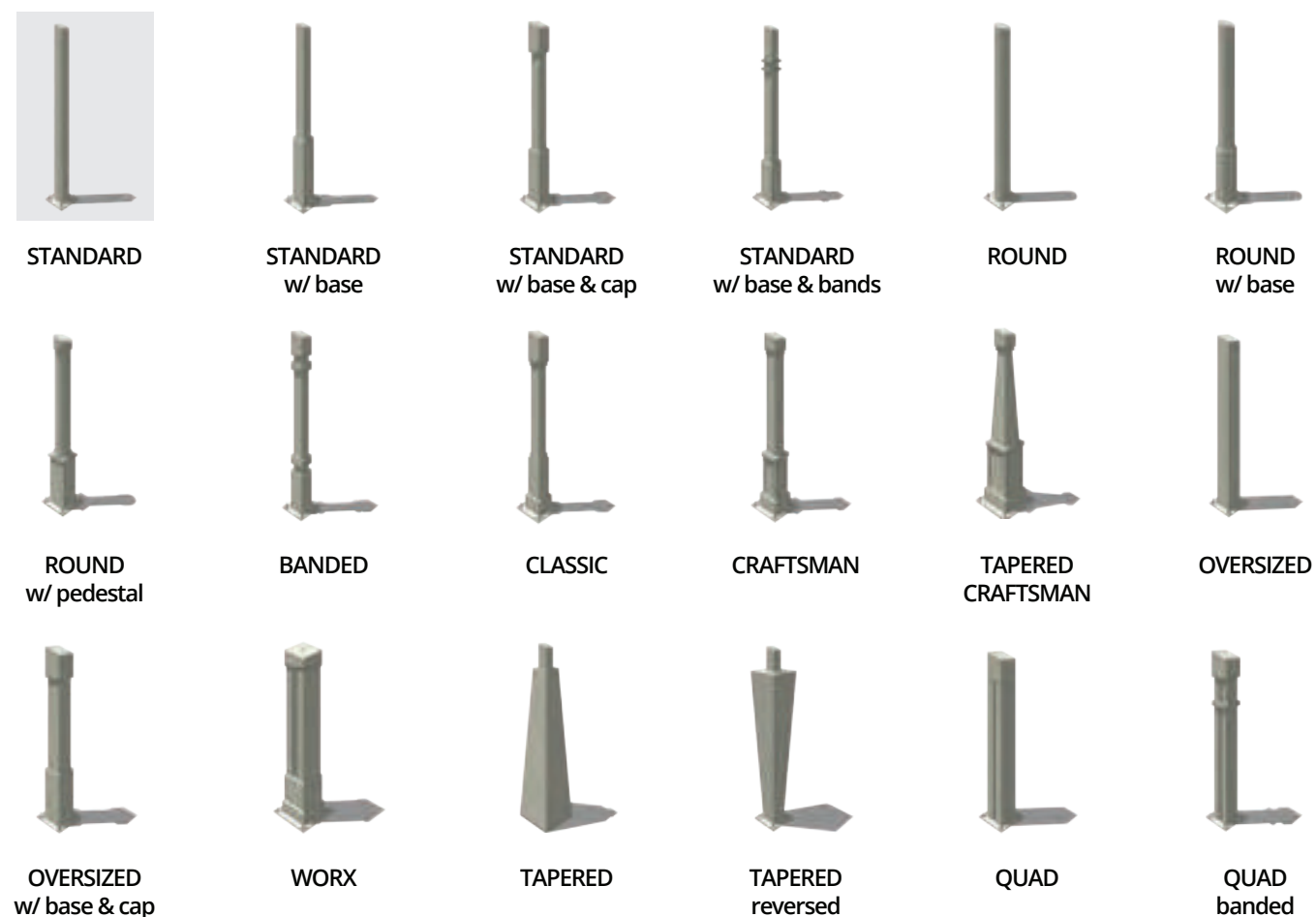
COVERWORX OPTIONS

OPTIONS & UPGRADES

All roof panels are Galvalume coated 24 ga. steel with a white bottom and a 20 year warranted Kynar 500 top finish available in a variety of colors (see page 31). Panels are fastened to frame with either exposed painted screws or concealed clips as with standing seam panels. Some panels may have color limitations. Fiberglass shingles are available upon request.

COLUMNS

Column styles can be combined. Custom designs as well as stub columns for locally provided masonry mounting are also available.



EAVE OPTIONS

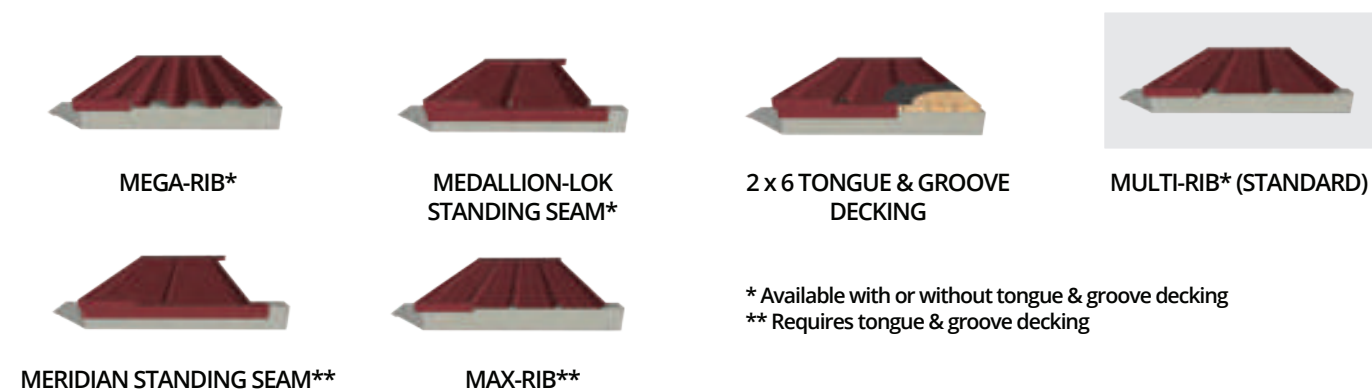


CUPOLAS

Complete steel Cupolas come pre-finished and are available on most shelters. Custom designs are also available.



METAL ROOF OPTIONS

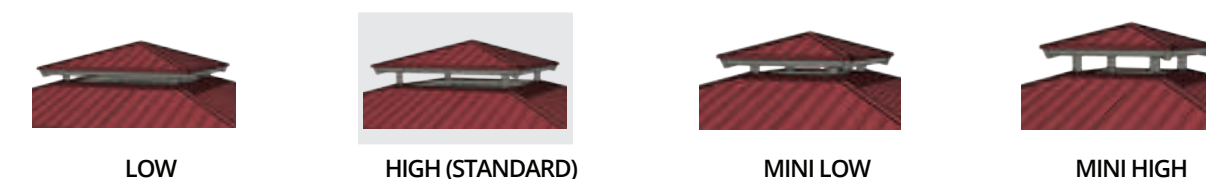


RAIL & LATTICE

Tube steel rails & lattice styles may be combined. Custom designs are also available.



VENTED ROOF OPTIONS



COVERWORX EXTRAS

SITE FURNISHINGS

Since 1987, Coverworx has provided a combination of the finest quality craftsmanship and unique design to bring you our full line of site accessories. Special request? Coverworx specializes in custom fabrication.

BENCHES & BIKE RACKS



Backless Steelworx

SUPPORTS: 1/2" x 2" steel bar. One-piece welded unit. May be surface mounted or freestanding. SEAT SURFACE: 1/4" x 1 1/2" steel bar and 1 5/16" O.D. steel pipe. FINISH: Polyester powder coated.



Economy

SUPPORTS: 2 3/8" O.D. galvanized pipe with ends capped. SLATS: 2" x 4" nominal. Available with #1 pressure treated pine, redwood, Douglas Fir, Pau Lope®, anodized aluminum, or recycled plastic. FINISH: Galvanized pipe with cold galvanizing finish on all welds.



Verve

SUPPORTS: 1/2" x 2" steel bar. One-piece welded unit. May be surface mounted or free-standing. SEAT SURFACE: 1/4" x 1 1/2" steel bar and 1 5/16" O.D. steel pipe. FINISH: Polyester powder coated. May be free-standing or surface mounted.



Vintage Parisian

Material Specifications: 2"x4" (Nom.) Wood or Recycled Plastic Slats (Seat Slats) 1/4" x 2.5" Steel Bar (Slat Supports) 1.66" O.D. x 11 Ga Steel Tube (Seat Frame) 1.32" O.D. x 14 Ga Steel Tube (Brace Tube) Cast Aluminum Leg Frames. Finish: Electrostatically applied polyester powder coating over E-Coated substrate. Hardware: Stainless Steel, Vandal Resistant (Frame Assembly). 1/4-20 Carriage Bolts, Stainless (Plank Assembly). Anchoring Hardware is not included.



JX Round Picnic Table

Frame: 1.66" OD ILG Steel Tube with 1" O.D. X-Brace Tubes. Mounting Plates: 3/16" Thick Steel Plate. Tops & Seats: 11 Ga. Steel perimeter frame, 13 Ga. Steel. Panels: 3/16" Thick Plate Mounting Brackets Hardware: Stainless Steel



Victorian

SUPPORTS: Heavy-duty cast iron. CROSS BRACE: 1 5/16" O.D. galvanized pipe. CENTER STRAP: 1/4" x 2" steel bar. SLATS: 2" x 3" nominal. Available with #1 pressure treated pine, redwood, Pau Lope®, or clear Douglas Fir. HARDWARE: Stainless Steel. FINISH: Polyester powder coated frame.

PICNIC TABLES, RECEPTACLES & GRILLS



WorxTable

END SUPPORTS: 3/8" x 4 1/2" steel bar with choice of 2 3/8" O.D. or 2 7/8" O.D. steel pipe. BRACING: 1 5/16" O.D. steel pipe and 11 gauge formed steel angle. SLATS: 3" x 4" and 3" x 6" nominal recycled plastic. FINISH: Polyester powder coated.



Economy

FRAME: 1 5/8" O.D. galvanized pipe. BRACES: 1 5/16" O.D. galvanized pipe. SLATS: 2" x 10" nominal. Available with #1 pressure treated pine, anodized aluminum, or recycled plastic. FINISH: Galvanized pipe with cold galvanizing finish on all welds.



Trash Cans

FRAME: 1/8" x 1" steel bar and 3/8" diameter steel bar. SLATS: 1" x 3" nominal. Available with #1 pressure treated pine or redwood. LINER: 22 gallon or 32 gallon plastic. FINISH: Frame and support powder coated black. • Receptacle factory assembled. FINISH: Polyester powder coated.



Ground

FIREBOX: 3/16" steel plate, 360° rotation, 15" x 20" x 10" high. COOKING GRATE: 1/2" diameter steel bars with 5/8" diameter support handles. Equipped with cool grips and adjusts to four different height settings. 300-square-inch cooking area. FINISH: Heat resistant non-toxic black enamel.



Double Standing

FIREBOX: 3/16" steel plate, 360° rotation, 24" x 36" x 10" high. COOKING GRATE: 1/2" diameter steel bars with 5/8" diameter support handles. Equipped with cool grips and adjusts to four different height settings. 864 total square-inch cooking area. FINISH: Heat resistant non-toxic black enamel.



Adjustable Camping

FIREBOX: 3/16" steel plate. Flips back for servicing. COOKING GRATE: 1/2" diameter steel bars with 5/8" diameter support handles. Equipped with cool grips and adjusts to four different height settings. 285-square-inch cooking area. FINISH: Heat resistant non-toxic black enamel.

COVERWORX 10 YEAR LIMITED WARRANTY

Coverworx-Recreational Architecture, a division of Ross and Barr, Inc. (hereinafter "Coverworx") warrants that the structure or product purchased will be free from defects in materials and workmanship under normal use for period of ten (10) years from the delivery date. The entire liability of Coverworx and its suppliers, and the exclusive remedy shall be for Coverworx to repair and replace materials found to be defective. The repair or replacement of materials shall be at the expense of Coverworx. This limited warranty is void if any damage has resulted from abnormal use, abuse, accident, vandalism, poor installation, lack of maintenance, misapplication, service or modifications by someone other than Coverworx or its suppliers. This warranty excludes color fading within ten (10) nautical miles of any area retaining salt water or brackish water. Any replacement part under warranty is warranted for the remaining original warranty period or 1 year, whichever is longer.



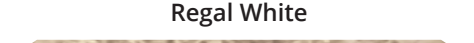
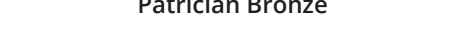
In the event of a defect claim, Coverworx shall be notified in writing within thirty (30) days from discovery, no later than thirty (30) days from the receipt of the notice. Coverworx management will determine whether to repair or replace defective materials and respond in writing to advise how Coverworx will proceed on the warranty claim. Coverworx disclaims all other warranties, expressed or implied, including but not limited to, implied warranties of merchantability and fitness for a particular purpose for the product and any accompanying materials required for installation. Coverworx will not be liable for any damages arising out of the use or inability to use the product, regardless of whether notification of such damages has been given.



COVERWORX COLOR OPTIONS

All Coverworx Steel Frame, Metal Roof and Trim work panels are available in the colors below. Mix and match to create a look that suits your needs and expresses your style. Choose a frame finish as well as a metal roof color from the following options. Contact our Coverworx sales staff for custom color information and further details.

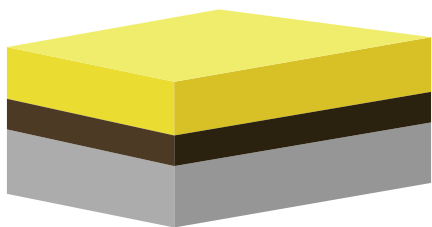
ROOF COLORS

		
McDonalds Yellow	Casco Orange	Champagne Metallic
		
Texas Silver Metallic	Prewathered Galvalume	Leadcoat
		
Terra Cotta	Buckskin	Silver Metallic
		
Almond	Bone White	Sandstone
		
Slate Gray	Dark Bronze	Mansard Brown
		
Patina Green	Colonial Red	Medium Bronze
		
Brite Red	Copper Penny	Regal Blue
		
Hartford Green	Brandywine	Evergreen
		
Roman Blue	Matte Black	Ash Gray
		
Surrey Beige	Regal White	Charcoal
		
Patrician Bronze	Galvalume Plus	

POWDER COATING (FRAME) COLORS

Standard RAL Powder colors are also available for only frame color choices

		
Hartford Green	Charcoal	Patina Green
		
Brandywine	Patrician Bronze	Colonial Red
		
Evergreen	Bone White	Medium Bronze
		
Roman Blue	Sandstone	Brite Red
		
Matte Black	Slate Gray	Regal Blue
		
Ash Grey	Dark Bronze	Autumn Red
		
Surrey Beige	Mansard Brown	Tudor Brown
		
Regal White	Light Stone	Timber Tan
		
Clay		



Powder coating with zinc rich primer and TGIC polyester

Shot blasted steel with factory applied zinc rich primer and TGIC Polyester (5-6 mil min. thickness on exterior and 3 mil min. thickness on interior).

Note: An Optional Super Durable TGIC and graffiti resistant TGIC color or clear coat is available for an upcharge.



A Division of Ross & Barr, Inc.

WWW.COVERWORX.COM
INFO@COVERWORX.COM

11800 EAST 9 MILE ROAD
WARREN, MI 48089

OFFICE: (586) 486-1088
FAX: (586) 754-9130
TOLL FREE: (800) 657-6118