



Play
Shade





Playground upgrades that are made in the shade.

Why Shade?

Playgrounds are a big investment—and like any other investment, you want to feel confident that you're getting the most value and the best quality for your dollar. Play Shade offers that added assurance—protecting your playground equipment and amenities while improving the guest experience.

The right fabric structure can block up to 96% of harmful UV rays, and can make your playground up to 20 degrees cooler year-round, allowing for longer play. Shade can also make your playground more inclusive—some children and adults have sun allergies, and others are more susceptible to sun poisoning and overheating due to certain medications. These medications are commonly used by children who have epilepsy, cerebral palsy, and autism. Children with these conditions might be unable to go to a playground unless there's adequate shade.



Blocking up to 96% of the sun's UV rays



Keeping your playground 20° cooler



Protection from inclement weather

Miracle® Play Shade Advantage

- Comes in a variety of fabric and post colors that match your playground
- Provides quick release options (QRE) to facilitate fabric attachment/removal
- Requires little to no maintenance
- Ensures greater quality control and comprehensive customer support



Single Post Pyramid

Our Single Post Pyramid shade can cover up to 260 square feet from a single column. This structure is an ideal choice for providing shade in a limited space, including dining or seating areas. Available in your choice of embedded or recessed base plate mounting options.

Sizes:

12' x 12'

14' x 14'

16' x 16'

Entry Heights:

8' | 10'



Quick Release
Available





Single Post Pyramid Cantilever

The Single Post Pyramid Cantilever shade provides the same benefits as the Single Post Pyramid, but its cantilevered design keeps columns out of the shaded area. This structure features a recessed base plate mounting option.

Sizes:

12' x 12'

14' x 14'

16' x 16'

Entry Height:

8'



Quick Release
Available





Hip

The Hip shade features clean, straight lines often found in surrounding buildings and structures and comes in a wide variety of sizes to shade large play structures and other outdoor spaces. Available in your choice of embedded or recessed base plate mounting options.

Sizes:

10' x 20'
15' x 25'
18' x 36'
20' x 24'
20' x 30'
20' x 34'
24' x 30'
24' x 40'
30' x 40''

Entry Height:

8' | 10' | 12'



Quick Release
Available





Hip Joined

Our Hip Joined shade features the same clean, straight lines as our traditional Hip shade, with shared steel posts that reduce the column count while increasing the shaded footprint. This cost-effective design is ideal for large play structures and areas needing extensive shade coverage. Available in your choice of embedded or recessed base plate mounting options.

Sizes:
30' x 60'

Entry Height:
12'



Quick Release
Available





Two-Post Hip

The Two-Post Hip shade is one of our most cost-effective designs and features two columns that provide up to 308 square feet of shade. Available in your choice of embedded or recessed base plate mounting options.

Sizes:

10' x 16'

14' x 22'

Entry Height:

8'



Quick Release
Available





Pyramid

The Pyramid shade is a four-post solution similar to our Hip structure. Its square, peaked roofline is ideal for covering extensive outdoor spaces such as areas featuring large play structures. Available in your choice of embedded or recessed base plate mounting options.

Sizes:

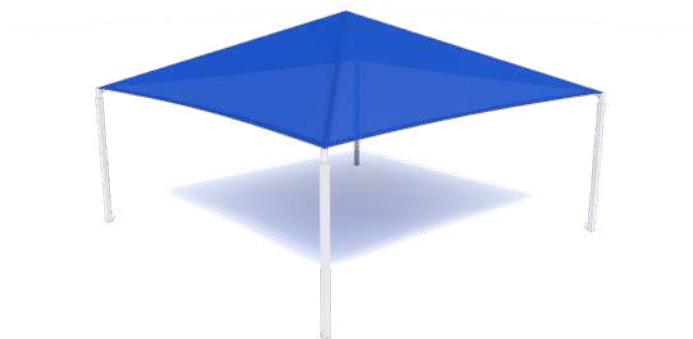
10' x 10'
14' x 14'
20' x 20'
24' x 24'
30' x 30'

Entry Heights:

8' | 10' | 12'



Quick Release
Available





Mariner Pyramid

Our Mariner Pyramid design provides the same amount of shade as our Hip and Pyramid structures, but features a more sophisticated look. Its unique shape and layered appearance give an added touch of distinction to outdoor spaces with dining, seating and large play structures. Available in your choice of embedded or recessed base plate mounting options.

Sizes:

20' x 20'

30' x 30'

Entry Height:

12'





Full Cantilever

The Full Cantilever design is a great choice for shading large areas that need to be clear of columns. It is ideal for covering large footprints such as extensive play structures, seating areas or bleachers. Available in your choice of embedded or recessed base plate mounting options.

Sizes:

10' x 12'

10' x 20'

Entry Heights:

8' | 10'



Quick Release
Available

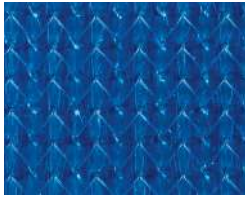


SHADESURE™ Fabrics

PASSES: NFPA 701 / ASTM-E84



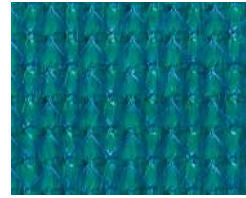
Navy Blue
90% shade factor
94% UV factor



Royal Blue
86% shade factor
94% UV factor



Laguna Blue
91% shade factor
96% UV factor



Turquoise
83% shade factor
92% UV factor



Rain Forest
89% shade factor
96% UV factor



Olive
89% shade factor
95% UV factor



Zesty Lime
84% shade factor
92% UV factor



Chocolate
92% shade factor
93% UV factor



Cinnamon
92% shade factor
93% UV factor



Arizona
84% shade factor
92% UV factor



Desert Sand
80% shade factor
92% UV factor



Terracotta
84% shade factor
90% UV factor



Sunflower Yellow
70% shade factor
94% UV factor



Electric Purple
83% shade factor
91% UV factor



White
57% shade factor
86% UV factor



Silver
88% shade factor
93% UV factor



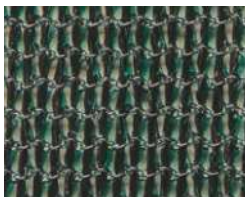
Black
95% shade factor
96% UV factor

COLOURSHADE® FR Fabrics

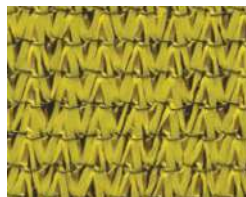
PASSES: NFPA 701 / ASTM-E84 / OSFM TITLE 19



Blue
80% shade factor
85% UV factor



Green
80% shade factor
85% UV factor



Yellow
80% shade factor
89% UV factor



Red
80% shade factor
86% UV factor



Terracotta
75% shade factor
82% UV factor



Desert Sand
80% shade factor
92% UV factor



Silver
80% shade factor
81% UV factor

Standard Steel Powder Coats



Red



Yellow



Tropical Yellow



Orange



Lime



Chartreuse



Green



Forest Green



Teal



Azure



Blue



Cobalt



Pink



Lavender



Plum



Beige



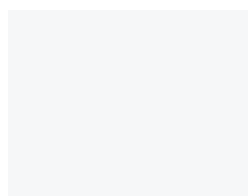
Sand



Brown



Dark Brown



White



Silver



Light Gray



Metallic Gray



Black

Shadesure™ fabrics carry a 10-year limited manufacturer's warranty from the date of installation, with the exception of Red, Yellow, Electric Purple, Zesty Lime, Cinnamon, and Olive fabrics which carry a 5-year limited warranty. The samples of the colors of the steel and the fabrics shown in this document are for demonstrative purposes and are subject to the printing capacities. Please contact us for physical samples of fabric and steel colors.



878 E Highway 60, Monett, MO, 65708 USA

Phone: 1-888-458-2752 International: +1-417-235-6917

Miracle-Recreation.com

Miracle Recreation Equipment Company is a PlayPower, Inc. Company.

Copyright ©2018 by PlayPower, Inc. All rights reserved

